



精密机床 专业制造商

PRECISION MACHINE TOOL

SPECIALIST MANUFACTURER



苏州牧远数控科技有限公司

Suzhou Muyuan CNC Technology Co., Ltd

地址: 苏州工厂: 苏州市吴中区木渎镇木东路399号尧峰工业园6幢
Address: Suzhou Factory: Building 6, Yaofeng Industrial Park, No. 399 Mudong Road, Mudu Town,
Wuzhong District, Suzhou City

电话: 400-998-2219

手机: 135 8486 5911

邮箱: Muyuanskj@126.com



个人微信

苏州牧远数控科技有限公司

Suzhou Muyuan CNC Technology Co., Ltd

公司简介

COMPANY PROFILE



苏州牧远数控科技有限公司是由一群行业资深的技术工程师共同创立，是一家集生产、制造、研发和销售为一体的企业。

公司成立后，与日本发那科、日本三菱、德国西门子、德国海德汉、西班牙发格、日本NSK、日本THK等国际龙头企业进行战略合作；采用定制化的模式，与行业巨头昆明正成功集团和云南太标集团结成战略同盟，保证了机床核心部件——铸件的稳定供应及品质保障；辅件应用台湾原装主轴，台湾原装丝杆、线轨等，运用日本先进的装配工艺、严谨的制造技术、结合专业工程师丰富的调试经验、严格执行标准化装配流程，保证每一台设备的合格出厂。

公司产品在航空航天、军工、5G、3C、工程机械、医疗器械、新能源等领域得到广泛使用，并获得好评。

公司研发针对高精、高速方面的设备取得了突破性的成就，并与台湾、日本的高速机相抗衡，是公司性价比最高的一款产品，不但帮助客户节省采购成本，并达到加工效率和需求。

牧远公司秉承“研发制造高端高品质的产品，加速推动我国制造业的步伐，同时解决广大用户的需求”为企业使命；以“成为国内最具有竞争力的微米级智能设备制造商，为股东和员工创造最大价值”为企业愿景；以“诚信感恩、追求卓越、专注创新”为企业核心价值观，为客户创造更大的价值，以“工匠”精神造福于社会，与员工、合作伙伴、股东共享发展，共赢未来！

Suzhou Muyuan CNC Technology Co., Ltd. was jointly founded by a group of senior technical engineers in the industry. It is an enterprise that integrates production, manufacturing, research and development, and sales.

After the establishment of the company, it has carried out strategic cooperation with international leading enterprises such as Fanak, Mitsubishi, Siemens, Heidehan, Fager, NSK and THK. With a customized model, we have formed a strategic alliance with the industry giants Kunming Zhengsuccessfully Group and Yunnan Taibiao Group to ensure the stable supply and quality assurance of the core parts of the machine tool - castings; The auxiliary parts apply Taiwan's original spindle, Taiwan's original screw, wire rail, etc., the use of Japan's advanced assembly process, rigorous manufacturing technology, combined with the rich debugging experience of professional engineers, strict implementation of standardized assembly process, to ensure that each equipment is qualified.

The company's products have been widely used in aerospace, military, 5G, 3C, construction machinery, medical equipment, new energy and other fields, and have been praised.

The company has made breakthrough achievements in the research and development of high-precision and high-speed equipment, and compete with the high-speed machines in Taiwan and Japan, which is the most cost-effective product of the company, not only to help customers save procurement costs, but also to achieve processing efficiency and demand.

Muyuan company adhering to the "R & D and manufacture of high-end high-quality products, accelerate the pace of China's manufacturing industry, while solving the needs of the majority of users" for the enterprise mission; "To become the most competitive micron intelligent equipment manufacturer in China, to create maximum value for shareholders and employees" as the enterprise vision; With "integrity, gratitude, pursuit of excellence, focus on innovation" as the core values of the enterprise, create greater value for customers, benefit the society with the spirit of "craftsman", share development with employees, partners, shareholders, and win-win future!

目录

Contents

立式高速机 Vertical high speed machine	01
立式五轴机 Vertical five-axis machine	03
高速直线电机 High speed linear motor	05
多头机 Multihead machine	07
立卧两用机 Standing and sleeping machine	09
型材机 Profile machine	11
三轴线轨机 Three axis rail machine	13
两线一硬机 Two wires and one hard machine	17
硬轨机 Hard rail engine	19
数控龙门加工中心机 CNC gantry machining center machine	21
雕铣机 Carving and milling machine Drilling machine	23
钻攻机 Drilling machine	25
卧式加工中心机 Horizontal machining center machine	27



Parameter list 参数表

	机型 Machine type	单位 Single position	MY-GS960	MY-GS1160
工作台 Worktable	工作台尺寸L*W Table size L*W	mm	1050*500	1200*600
	工作台最大承重 Max capacity	kg	300	800
	T型槽 T-slot	no/mm	18*5*100	18*5*100
行程 Stroke	X/Y/Z轴 X/Y/Z axis	mm	900/600/550	1100/600/600
	主轴端到工作台的距离 Distance from spindle end to workbench	mm	185-685	175-775
	主轴中心至立柱轨道距离 Distance from spindle center to column rail	mm	600	645
	轨道形式 Track form	/	滚珠线轨 Linear guide	滚珠线轨 Linear guide
主轴 Spindle	主轴锥孔(型号/安装尺寸) Spindle taper hole	mm	BT40 φ150	BT40 φ150
	主轴转速 Spindle speed	rpm	15000	15000
	主轴传动方式 Spindle transmission mode	/	直连式 Direct driven	直连式 Direct driven
马达 Motor	主轴马达(电机) Spindle motor (motor)	kw	7.5-11	7.5-11
	三轴伺服马达X Three axis servo motor X	/	a22	a22
	三轴伺服马达Y Three axis servo motor Y	/	a22	a22
	三轴伺服马达Z Three axis servo motor Z	/	a22	a22
	切削水马达 Cutting water motor	m ³ /h-m	4-40	4-40
精度 Accuracy	定位精度 positioning	mm	±0.005	±0.005
	重复定位精度 Repeat positioning	mm	±0.003	±0.003
进给 Feeding	X/Y/Z轴快速进给 X/Y/Z axis rapid feed	m/min	48/48/36	48/48/36
	最大切削进给 Maximum cutting feed	mm/min	10000	10000
机床尺寸 Feeding	长/宽/高 L/w/h	m	2800*2600*2800	3250*2850*2750
	重量 Weight	T	6.6	8
标准配件 Machinesize	自动给油润滑系统 Automatic feed lubrication system	刚性攻牙 Rigid tapping	LED警示灯 LED warning light	自动对刀仪 Automatic knife setting machine
	全罩式密封钣金 Full cover sealing sheet metal	空调 Air-conditioning	LED照明灯 LED lighting	
	手提吹气枪 Hand blow gun	油冷机 Oil cooler	主轴环状喷水 Spindle ring spray	
选配件 Select accessories	三轴光栅尺 Three axis grating ruler	刀具破损检测器 Tool breakage detector	电主轴 Motorized spindle	油污回收系统 Oil recovery system
	主轴中心出水 Spindle center discharge	圆盘刀库 Disk cutter library	第四轴 Fourth axis	

Product description 产品说明

- 高速切削加工允许使用较大的进给率，比常规切削加工提高5~10倍，单位时间材料去除率可提高3~6倍。当加工需要大量切除金属的零件时，可使加工时间大大减少。

High-speed cutting allows the use of a larger feed rate, which is 5 to 10 times higher than conventional cutting, and the material removal rate per unit time can be increased by 3 to 6 times. When machining parts that require a large amount of metal removal, the processing time can be greatly reduced.

- 因为高速旋转时刀具切削的激励频率远离工艺系统的固有频率，不会造成工艺系统的受迫振动，保证了较好的加工状态。由于切削深度、切削宽度和切削力都很小，使得刀具、工件变形小，保持了尺寸的精确性，也使得切削破坏层变薄，残余应力小，实现了高精度、低粗糙度加工。

Because the cutting tool excitation frequency is far away from the natural frequency of the process system when rotating at high speed, it will not cause forced vibration of the process system and ensure a better processing state. Because the cutting depth, cutting width and cutting force are very small, the tool and workpiece deformation is small, the accuracy of the size is maintained, the cutting failure layer is thinned, the residual stress is small, and the high-precision and low-roughness machining is realized.

- 高速切削加工是面向21世纪的一项高新技术，它以高效率、高精度和高表面质量为基本特征，在汽车工业、航空航天、模具制造和仪器仪表等行业中获得了越来越广泛的应用，并已取得了重大的技术经济效益，是当代先进制造技术的重要组成部分。

High-speed cutting machining is a high-tech for the 21st century, it with high efficiency, high precision and high surface quality as the basic characteristics, in the automotive industry, aerospace, mold manufacturing and instrumentation and other industries have been more and more widely used, and has achieved significant technical and economic benefits, is an important part of contemporary advanced manufacturing technology.

- 由于高速切削采用极浅的切削深度和窄的切削宽度，因此切削力较小，与常规切削相比，切削力至少可降低30%，这对于加工刚性较差的零件来说可减少加工变形，使一些薄壁类精细工件的切削加工成为可能。

Due to the extremely shallow cutting depth and narrow cutting width of high-speed cutting, the cutting force is small, compared with conventional cutting, the cutting force can be reduced by at least 30%, which can reduce the processing deformation of parts with poor rigidity, making it possible to cut some thin-walled fine workpieces.

- 常规切削加工不能加工淬火后的材料，淬火变形必须进行人工修整或通过放电加工解决。高速切削则可以直接加工淬火后的材料，在很多情况下可完全省去放电加工工序，消除了放电加工所带来的表面硬化问题，减少或免除了人工光整加工。由于高速切削的特点决定了高速切削可以节省切削液、刀具材料和切削工时，从而可极大地节约自然资源和减少对环境的污染，提高生产率和产品质量，因此，高速切削在工业生产尤其是规模较大的汽车企业和与之相关的模具制造业上的应用具有“燎原”之势。

Conventional cutting can not be processed after quenching material, quenching deformation must be manually trimmed or solved by electrical discharge machining. High-speed cutting can directly process the quenched material, in many cases can completely eliminate the discharge machining process, eliminate the surface hardening problem caused by the discharge machining, reduce or eliminate the artificial finishing. Due to the characteristics of high-speed cutting determines that high-speed cutting can save cutting fluid, tool materials and cutting hours, which can greatly save natural resources and reduce environmental pollution, improve productivity and product quality, therefore, high-speed cutting in industrial production, especially large-scale automobile enterprises and related mold manufacturing applications have a "prairie fire" trend.



Parameter list 参数表

	机型 Machine type	单位 Single position	MY-WZ200	MY-WZ400	MY-WZ650
工作台 Worktable	工作台尺寸L*W Table size L*W	mm	Φ200	Φ400	Φ650
	工作台最大承重 Max capacity	kg	50	120	300
	T型槽 T-slot	no/mm	4-12*90°	8-14*45°	5-18-100°
行程 Stroke	X/Y/Z轴 X/Y/Z axis	mm	600/200/300	800/360/400	820/520/500
	B/C行程 B/C travel	/	±110° /360°	±110° /360°	±110° /360°
	主轴端到工作台的距离 Distance from spindle end to table	mm	80-380	150-550	150-650
	主轴中心至立柱轨道距离 Distance from spindle center to column track	mm	140	183.5	187
	轨道形式 Orbital form	/	滚珠线轨 Linear guide	滚珠线轨 Linear guide	滚珠线轨 Linear guide
主轴 Spindle	主轴锥孔(型号/安装尺寸) Spindle taper hole	/	BT30 φ100	BT40 φ120	BT40 φ150
	主轴转速 Spindle speed	rpm	20000	12000	15000
	主轴传动方式 Spindle drive mode	/	直连式 Direct driven	直连式 Direct driven	直连式 Direct driven
马达 Motor	主轴马达(电机) Spindle motor (motor)	kw	5.5	7.5	11
	三轴伺服马达X Three axis servo motor X	Nm	16	22	22
	三轴伺服马达Y Three axis servo motor Y	Nm	12	22	22
	三轴伺服马达Z Three axis servo motor Z	Nm	16	22	22
	切削水马达 Cutting water motor	m³/h-m	4-40	4-40	4-40
精度 Accuracy	定位精度 positioning	mm	±0.005	±0.005	±0.005
	重复定位精度 Repeat positioning	mm	±0.003	±0.003	±0.003
进给 Feeding	X/Y/Z轴快移速度 X/Y/Z speed	m/min	30/30/30	36/36/36	24/24/24
	最大切削进给 Maximum cutting feed	mm/min	10000	10000	10000
机床尺寸 Feeding	长/宽/高 L/w/h	mm	2400*2500*2800	2800*2600*2800	2900*2850*2800
	重量 Weight	T	4.3	8	11.5
标准配件 Machinesize	自动给油润滑系统 Automatic feed lubrication system	刚性攻牙 Rigid tapping	LED警示灯 LED warning light		
	全罩式密封钣金 Full cover sealing sheet metal	空调 Air-conditioning	LED照明灯 LED lighting		
	手提吹气枪 Hand blow gun	油冷机 Oil cooler	主轴环状喷水 Spindle ring spray		
选配件 Select accessories	三轴光栅尺 Three axis grating ruler	刀具破损检测器 Tool breakage detector	电主轴 Motorized spindle	自动对刀仪 Automatic knife setting machine	油污回收系统 Oil recovery system
	主轴中心出水 Spindle center discharge	圆盘刀库 Disk cutter library			

Product description 产品说明

■ CNC 五轴加工中心技能含量高，精度高，应用广。它不仅用于民用工业，还用于航空、航天、军事、科研、精细设备、高精医疗设备等行业。

CNC five axis machining center has high skill content, high accuracy, and wide application. It is not only used in civil industry, but also in industries such as aviation, aerospace, military, scientific research, precision equipment, and high-precision medical equipment.

■ 五轴联动加工中心的娴熟，免去了从杂乱的角度从头定位工件所需的反复调试和装卡。这样不仅节省了时间，还大大减少了误差，省去了安装工件所需的昂贵和昂贵的夹具费用。

The proficiency of the five axis linkage machining center eliminates the need for repeated debugging and clamping to reposition the workpiece from a cluttered perspective. This not only saves time, but also greatly reduces errors, eliminating the things required for installing workpieces and expensive fixture costs.

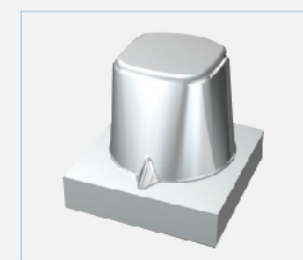
■ 在加工深度大、型腔陡的情况下，通过工件或主轴的附加旋转和摆动，为端铣刀的加工创造了较好的工艺条件，避免了刀杆与型腔壁的碰撞，降低了加工物件时的晃动和损坏风险，有利于提高模具的外观质量。事物的处理能力和耐久性。

In the case of large processing depth and steep cavity, the additional rotation and swing of the workpiece or spindle create good process conditions for the processing of the end milling cutter, avoid the collision between the tool rod and the cavity wall, reduce the risk of shaking and damage during the processing of the object, and is conducive to improving the appearance quality of the mold. The processing ability and durability of things.

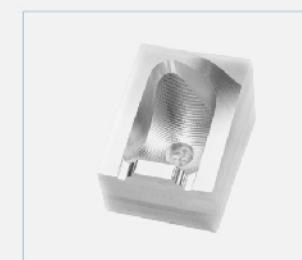
■ 使机床能够处理杂乱的零件，这是其他方法做不到的，包括钻孔、腔凹和针对杂乱外观的锥度处理。

Enabling the machine tool to handle messy parts is something that other methods cannot do, including drilling, cavity concavity, and taper treatment for messy appearances.

Processed product 加工产品



玻璃模具



车灯模具



压铸模具



叶轮



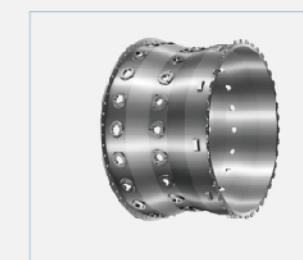
差速器壳体



齿轮



人工膝关节



航空机匣



Parameter list 参数表

	机型 Machine type	单位 Single position	MY-S6
工作台 Worktable	工作台尺寸L*W Table size L*W	mm	620*500
	工作台最大承重 Max capacity	kg	200
	T型槽 T-slot	no/mm	14*125*4
行程 Stroke	X/Y/Z轴 X/Y/Z axis	mm	600*400*260
	主轴端到工作台的距离 Distance from spindle end to workbench	mm	110-370
	轨道形式 Track form	/	滚柱线轨带绝对式测量系统 Motorized spindle
主轴 Spindle	主轴锥孔(型号/安装尺寸) Spindle taper hole (Model/mounting size)	/	HSK/E50
	主轴转速 Spindle speed	rpm	30000
	额定功率 Rated power	KW	15
	最大功率 Maximum power	KW	20
	额定扭矩 Rated torque	KW	20
直线马达 Linear motor	主轴传动方式 Spindle drive mode	/	电主轴 Motorized spindle
	最大功率 Maximum power	kw	4.8/3.2/4.8
精度 Accuracy	最大推力 Maximum thrust	n	4500/3060/4500
	定位精度 positioning	mm	± 0.002
速度 Velocity	重复定位精度 Repeat positioning	mm	± 0.0015
	切削速度 Cutting speed	m/min	24
刀库 Tool magazine	快移速度 Fast moving speed	mm/min	60000
	刀具规格 Tool specification	/	HSK /E50
	刀具换刀方式 Tool change mode	/	机械臂式 Robotic arm type
	刀具数量 Number of tools	T	20
	刀具最大直径 Maximum tool diameter	mm	75
	最大刀具长度 Maximum tool length	mm	170
	最大刀具允许重量 Maximum allowable tool weight	kg	5
机床尺寸 Feeding	换刀时间 Tool change time	sec	1.2
	长/宽/高 L/W/H	mm	2100*2100*2600
标准配件 Machinesize	重量 Weight	T	6
	自动给油润滑系统 Automatic feed lubrication system	刚性攻牙 Rigid tapping	LED警示灯 LED warning light
	全罩式密封钣金 Full cover sealing sheet metal	空调 Air-conditioning	LED照明灯 LED lighting
选配件 Select accessories	手提吹气枪 Hand blow gun	油冷机 Oil cooler	主轴环状喷水 Spindle ring spray
	三轴光栅尺 Three axis grating ruler	刀具破损检测器 Tool breakage detector	电主轴 Motorized spindle
	主轴中心出水 Spindle center discharge	圆盘刀库 Disk cutter library	自动对刀仪 Automatic knife setting machine
	油污回收系统 Oil recovery system		

Product characteristics 产品特点

01/直线电机驱动/Linear motor drive

- X/Y/Z轴采用最新科技直线电机驱动，其为非接触式、动力直接传送，无背隙、无磨损，具有高精度、高进给速率及高加工速度的加工优势。

The X/Y/Z axis is driven by the latest technology linear motor, which is non-contact, direct power transmission, no backlash, no wear, and has the advantages of high precision, high feed rate, and high processing speed.

- 采用无机械组件连接，免维修，使用寿命长;无机件式传动，具备良好的静音功能。

Adopting non mechanical component connection, maintenance free, and long service life; No mechanical transmission, with excellent mute function.

02/HSK E40换刀装置及变频式圆盘刀库

HSK E40 tool changer and variable frequency disc tool magazine

- HSK E40刀柄两面拘束与主轴锥度贴合，无定位缺口，在操作的过程中能提供更好的刚性，高速运行下风阻更小，刀具动平衡更优秀。

The HSK E40 tool handle is constrained on both sides and fits with the spindle taper, without positioning gaps, providing better rigidity during operation. The wind resistance is smaller during high-speed operation, and the tool dynamic balance is better.

- 刀时间;降低故障率,减少售服成本;增加人员安全性;有效保护高速主轴;提高刀库使用寿命;使刀库稳定性更好。

Knife time; Reduce failure rate and reduce sales and service costs; Increase personnel safety; Effectively protecting high-speed spindles; Improve the service life of the tool magazine; Improve the stability of the tool magazine.



03/绝对式光栅尺/Absolute grating ruler

- 一体式磁栅测量系统将高精度的直线编码器和导轨结合在一起，其中扫描头内的元件电路采用惠斯通电桥设计，将温度变化、设备老化和外部磁场的影响降到最低。

The integrated magnetic grating measurement system combines a high-precision linear encoder and a guide rail, and the component circuit inside the scanning head adopts a Wheatstone bridge design to minimize the impact of temperature changes, equipment aging, and external magnetic fields.

- 因为磁尺和导轨之间的整体连接以及导轨和床身之间良好的刚性连接，保证了测量系统和床身之间有良好的热传递，因此无需另增基准点或温度传感器也能达到出色的运行稳定性。

Because the overall connection between the magnetic ruler and the guide rail, as well as the good rigid connection between the guide rail and the bed, ensures good heat transfer between the measurement system and the bed, excellent operational stability can be achieved without the need for additional reference points or temperature sensors.

- 三轴均采用FAGOR/HEIDENHAIN全闭环绝对式直线光栅尺进行闭环控制，提高了机床的定位精度、重复定位精度和精度可靠性，确保机床加工的准确性。

All three axes adopt FAGOR/HEIDENHAIN fully closed absolute linear grating ruler for closed-loop control, improving the positioning accuracy, repeated positioning accuracy, and accuracy reliability of the machine tool, ensuring the accuracy of machine processing.

三轴全行程设计

Three-axis full travel design

整机防护

Whole machine protection





Parameter list
参数表

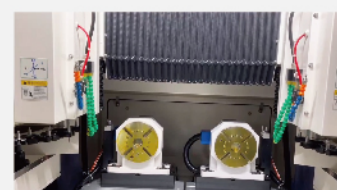
	机型 Machine type	单位 Single position	MY-LV970双主轴头	MY-LV500 八主轴头
工作台 Worktable	工作台尺寸L*W Table size L*W	mm	1400*650	2000*810 (可定制/customizable)
	工作台最大承重 Max capacity	kg	800	1500
	T型槽 T-slot	no/mm	5-18*135	5-18*147.5
行程 Stroke	X/Y/Z轴 XYZ axis	mm	1100/650/750	500/800/800
	主轴端到工作台的距离 Distance from spindle end to table	mm	95-845	85-885
	主轴头跨距 Spindle head span	mm	500	230 (可定制/customizable)
	单主轴左右分钟行程 Single spindle about minutes of travel	mm	600	/
	主轴中心至立柱轨道距离 Distance from spindle center to column track	mm	722	875
	轨道形式 Orbital form	/	滚珠线轨 Linear guide	滚珠线轨 Linear guide
主轴 Spindle	主轴锥孔 (型号/安装尺寸) Spindle taper hole (Model/mounting size)	/	BT40/150机械主轴/Mechanical spindle	BT30/110电主轴
	主轴转速 Spindle speed	rpm	10000 (可选配/optional)	24000 (可选配)
	主轴传动方式 Spindle drive mode	/	皮带式 Belt type	电主轴 Motorized spindle
马达 Motor	主轴马达 Spindle motor	kw	7.5	5.5-7.5
	三轴伺服马达X Three axis servo motor X	Nm	20	28
	三轴伺服马达Y Three axis servo motor Y	Nm	20	32
	三轴伺服马达Z Three axis servo motor Z	Nm	20	36
	切削水马达 Cutting water motor	m³/h-m	4-40	4-40

Product description
产品说明

■ 控制软件

采用模拟量控制方式，控制系统与驱动器闭环，实现高速、精准控制。兼容 MasterCAM, ArtCAM, Pro-E, UG, AutoCAD 等设计软件，三种权限模式（操作员模式、厂商模式、开发商模式），可以保护机床各个等级参数，避免操作员误修改机床关键参数。

Using analog control mode, the control system and the driver closed loop to achieve high speed and accurate control. Compatible with MasterCAM, ArtCAM, Pro-E, UG, AutoCAD and other design software, three permission modes (operator mode, manufacturer mode, developer mode), can protect the various levels of machine parameters, avoid the operator to modify the machine key parameters by mistake.



■ 配备高转速高精密主轴和先进的主轴冷却恒温系统。
Equipped with high speed and high precision spindle and advanced spindle cooling constant temperature system.

■ 侧冲水冲屑系统，有效防止机器内切屑堆积。
Side flushing chip system, effectively prevent the accumulation of chips in the machine.

■ 可选配探头功能，支持多个Z轴分别进行深度补偿。
Optional probe function to support multiple Z-axes for depth compensation.

■ 机床主体结构

整机（底座和床身）采用花岗岩大理石，不受温度影响，床身稳定，永久不变形，加工精度高，高速运行稳定性好。

The whole machine (base and bed) adopts granite marble, which is not affected by temperature, stable bed, permanent deformation, high processing precision, and good high-speed operation stability.

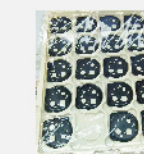


■ 刀库设计在Y轴后面，产品加工时实现与加工区完全隔离，有效防护水屑影响；伺服换刀方式，适用于复杂的加工需求，用于多把刀具加工的场所。

The tool store is designed behind the Y axis, and the product is completely isolated from the processing area during processing. Effective protection against water debris; Servo tool change mode, suitable for complex processing needs, Used for machining with multiple tools.

■ 多轴联动配置，多头可同时对产品进行多片同时加工。

Multi-axis linkage configuration, multi-head can simultaneously process multiple pieces of products.



Parameter list
参数表

	机型 Machine type	单位 Single position	MY-LV970双主轴头	MY-LV500 八主轴头
精度 Accuracy	定位精度 Positioning accuracy	mm	±0.005	±0.005
	重复定位精度 positioning accuracy	mm	±0.003	±0.003
进给 Feeding	X/Y/Z轴快速进给 XYZ axis fast feed	m/min	24/24/24	24/24/16 Robotic arm type
	最大切削进给 Maximum cutting feed	mm/min	10000	10000
机床尺寸 Feeding	长/宽/高 L/W/H	mm	3250*2850*2750	2800*2600*2800
	重量 Weight	T	8	9
标准配件 Machinesize	自动给油润滑系统 Automatic feed lubrication system	刚性攻牙 Rigid tapping	LED警示灯 LED warning light	
	全罩式密封钣金 Full cover sealing sheet metal	空调 Air-conditioning	LED照明灯 LED lighting	
	手提吹气枪 Hand blow gun	油冷机 Oil cooler	主轴环状喷水 Spindle ring spray	
选配件 Select accessories	三轴光栅尺 Three axis grating ruler	刀具破损检测器 Tool breakage detector	电主轴 Motorized spindle	
	主轴中心出水 Spindle center discharge	圆盘刀库 Disk cutter library	自动对刀仪 Automatic knife setting machine	油污回收系统 Oil recovery system



Parameter list 参数表

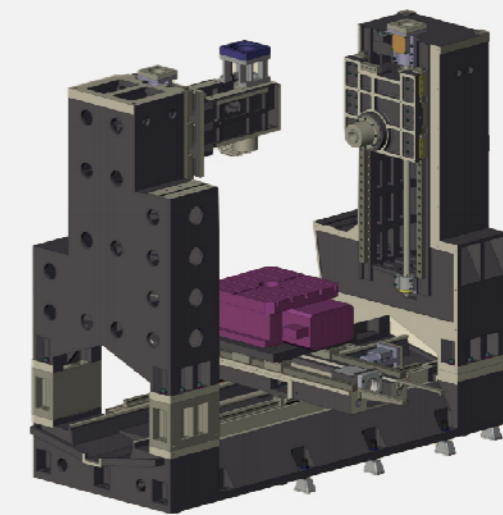
	机型 Machine type	单位 Single position	MY-LV970
工作台 Worktable	工作台尺寸L*W Table size L*W	mm	1200*650
	工作台最大承重 Max capacity	kg	800
行程 Stroke	X/Y/Z轴 X/Y/Z axis	mm	1100*1000*750
	卧加主轴中心至台面距离 Distance from spindle center to table	mm	310-1060
	卧加主轴端面至台面中心距离 Horizontal plus spindle end face to the center of the table	mm	210-1210
	转台T型槽 Turntable T-slot	no/mm	5-18*120
	卧加主轴型号 Horizontal plus spindle model	/	BT40/150/10000
	立加主轴型号 Vertical spindle model	/	BT40/150/10000
	立加主轴中心到立加立柱导轨距离 Distance from spindle center to column guide rail	mm	700
	立加主轴中心到卧加立柱导轨距离 Distance between vertical spindle center and horizontal column guide rail	mm	1162
马达 Motor	立加主轴端面到台面距离 Add distance from spindle end face to table surface	mm	395-1145
	轨道形式 Orbital form	/	滚珠线轨 Linear guide
	主轴马达(电机) Spindle motor (motor)	kw	11
	三轴伺服马达X Three axis servo motor X	Nm	20
	三轴伺服马达Y Three axis servo motor Y	Nm	20
	三轴伺服马达Z Three axis servo motor Z	Nm	20
	切削水马达 Cutting water motor	m ³ /h-m	4-40

Product description 产品特点

- 立卧转换加工中心是在立式加工中心的基础上，扩大Y、Z加工空间，配置了立、卧自动转换铣头和自动分度回转工作台形成的机型。采用该种机型，可一次装夹完成工作的铣、镗、钻、攻丝等多工序五面加工，极大地提高了加工效率，节约加工成本。

The vertical and horizontal conversion machining center is a type of machine that expands the Y and Z machining space on the basis of the vertical machining center, and is equipped with automatic vertical and horizontal conversion milling heads and automatic indexing rotary worktables. Using this model, multiple processes such as milling, boring, drilling, and tapping can be completed in one clamping process, greatly improving processing efficiency and saving processing costs.

- 结构紧凑占地小。
Compact structure and small footprint.
- 性价比高。
High cost performance.
- 全防护设计。
Fully protected design.
- 适合零件侧面的铣，钻，攻，镗等工序。
Suitable for milling, drilling, tapping, boring and other processes on the side of parts.
- 适合各类箱体，阀体，型材端面等加工。
Suitable for all kinds of box, valve body, profile end face processing.



高精度
High precision
寿命长
Long life
低背隙
Low backlash

Parameter list 参数表

	机型 Machine type	单位 Single position	MY-LV970
精度 Accuracy	定位精度 Positioning accuracy	mm	±0.005
	重复定位精度 Positioning accuracy	mm	±0.003
进给 Feeding	X/Y/Z轴快速进给 X/Y/Z axis fast feed	m/min	24/24/24
	最大切削进给 Maximum cutting feed	mm/min	10000
机床尺寸 Feeding	长/宽/高 L/w/h	mm	3250*3350*3400
	重量 Weight	T	9
标准配件 Machinesize	自动给油润滑系统 Automatic feed lubrication system	刚性攻牙 Rigid tapping	LED警示灯 LED warning light
	全罩式密封钣金 Full cover sealing sheet metal	空调 Air-conditioning	LED照明灯 LED lighting
	手提吹气枪 Hand blow gun	油冷机 Oil cooler	主轴环状喷水 Spindle ring spray
选配件 Select accessories	三轴光栅尺 Three axis grating ruler	刀具破损检测器 Tool breakage detector	电主轴 Motorized spindle
	主轴中心出水 Spindle center discharge	圆盘刀库 Disk cutter library	自动对刀仪 Automatic knife setting machine
	油污回收系统 Oil recovery system		



Parameter list
参数表

	机型 Machine type	单位 Single position	MY-G16L	MY-G25L	MY-G45L	MY-G60L
工作台 Worktable	工作台尺寸L*W Table size L*W	mm	2000*500	3000*500	5000*500	7000*500
	工作台最大承重 Max capacity	kg	2000	3000	4000	6000
	T型槽 T-slot	no/mm	18*5*100	18*5*100	18*5*100	18*5*100
行程 Stroke	X/Y/Z轴 XYZ axis	mm	1600*550*450(600)	2500*550*450 (600)	4500*550*450 (600)	6500*550*450 (600)
	主轴端到工作台的距离 Distance from spindle end to table	mm	100-550(700)	100-550(700)	100-550(700)	100-550(700)
	主轴中心至立柱轨道距离 Distance from spindle center to column track	mm	620	620	620	620
主轴 Spindle	轨道形式 Orbital form	/	滚珠线轨 Linear guide	滚珠线轨 Linear guide	滚珠线轨 Linear guide	滚珠线轨 Linear guide
	主轴锥孔 (型号/安装尺寸) Spindle taper hole	mm	BT40 φ150	BT40 φ150	BT40 φ150	BT40 φ150
	主轴转速 Spindle speed	rpm	8000/12000	8000/12000	8000/12000	8000/12000
马达 Motor	主轴传动方式 Spindle drive mode	/	皮带/直连式 Belt/straight connection	皮带/直连式 Belt/straight connection	皮带/直连式 Belt/straight connection	皮带/直连式 Belt/straight connection
	主轴马达 (电机) Spindle motor (motor)	kw	7.5/11	7.5/11	7.5/11	7.5/11
	三轴伺服马达X/Y/Z Three axis servo motor XYZ	/	β 22/ β 22/ β 22	β 22/ β 22/ β 22	β 22/ β 22/ β 22	β 22/ β 22/ β 22
精度 Accuracy	切削水马达 Cutting water motor	m ³ /h-m	4-40	4-40	4-40	4-40
	定位精度 positioning	mm	±0.02	±0.02	±0.02	±0.02
	重复定位精度 Repeat positioning	mm	±0.015	±0.015	±0.015	±0.015
进给 Feeding	X/Y/Z轴快速进给 XYZ axis fast feed	m/min	36 (60) /36/36	30 (60) /36/36	30 (60) /36/36	30 (60) /36/36
	最大切削进给 Maximum cutting feed	mm/min	12000	12000	12000	12000
机床尺寸 Feeding	长/宽/高 L/W/H	mm	4000*2500*2500	5000*2500*2500	7000*2500*2500	9000*2500*2500
	重量 Weight	T	6	7	8.5	11
标准配件 Machinesize	自动给油润滑系统 Automatic feed lubrication system	刚性攻牙 Rigid tapping	LED警示灯 LED warning light	水箱及集屑箱 Water tank and chip collecting box	工具箱 Toolbox	组合压板 Composite clamp
	全罩式密封钣金 Full cover sealing sheet metal	空调 Air-conditioning	LED照明灯 LED lighting	主轴鼻端防尘吹气 Dust blowing at nose end of spindle	强力夹头 Strong chuck	锁刀座 Lock seat
	主轴环状喷水 Spindle ring spray					
选配件 Select accessories	三轴光栅尺 Three axis grating ruler	刀具破损检测器 Tool breakage detector	油污回收系统 Oil recovery system	15000转直连式主轴 15000 RPM straight spindle	主轴中心出水 Spindle center discharge	自动排屑机 Automatic chip removal machine
	第四轴 Fourth axis	侧铣头 Side milling head				

Product description
产品特点

■ 采用台湾原装重载线性导轨，刚性强、动态精度佳；三轴传动采用台湾产研磨双螺母滚珠丝杆加齿轮齿条结构，结构紧凑、运动平稳、精度高。

Adopting Taiwan's original heavy-duty linear guide rail, with strong rigidity and excellent dynamic accuracy; The three-axis transmission adopts a Taiwan made grinding double nut ball screw and gear rack structure, with a compact structure, smooth movement, and high accuracy.

■ 高刚性的台湾产主轴，采用润滑脂润滑，可使主轴轴承得到恒定和可靠的润滑；+底座采用铸件大水盘结构，防水性能好。

The high rigidity Taiwan made spindle is lubricated with lubricating grease, which can provide constant and reliable lubrication for the spindle bearings+ The base adopts a cast large water tray structure, with good waterproof performance.

■ 机床主要大件:

底座、工作台、立柱、床鞍、主轴箱均采用优质树脂砂造型、高强度优质铸铁，具有完善的热处理工艺过程来消除残余应力，并布置足够的加强筋板，保证整机具有足够的强度、刚性和高稳定性。

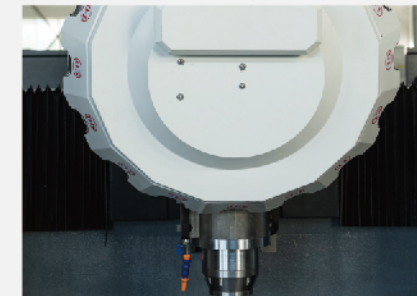
Main large parts of the machine tool:

The base, workbench, column, bed saddle, and spindle box are all made of high-quality resin sand molding, high-strength and high-quality cast iron, with a complete heat treatment process to eliminate residual stress, and sufficient reinforcement plates are arranged to ensure that the entire machine has sufficient strength, rigidity, and high stability.

高速
High speed
高精
Highly refined
高刚性
High rigidity



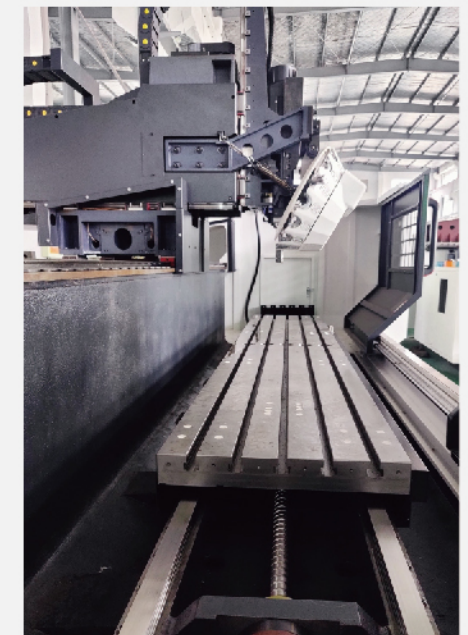
伺服刀库
Servo tool changer



整机采用高精滚珠丝杆，立柱与工作台相对运动，配合高床身设计，重心低，具有高效率、高精、高寿命等特点。

高效率结构

High efficiency structure



先进的设计理念

Advanced design concept



Parameter list 参数表

	机型 Machine type	单位 Single position	V8	MY-LV855	MY-LV1167	MY-LV1270
工作台 Worktable	工作台尺寸L*W Table size L*W	mm	500*1000	550*1000	1200*600	1360*700
	工作台最大承重 Max capacity	kg	500	500	800	1000
	T型槽 T-slot	no/mm	5*18*100	5*18*90	18*5*100	5*18*122
行程 Stroke	X/Y/Z轴 XYZ axis	mm	800/500/500	800*550/550	1100/600/700	1200/700/650
	主轴端到工作台的距离 Distance from spindle end to table	mm	150-650	120-670	110-810	130-780
	主轴中心至立柱轨道距离 Distance from spindle center to column track	mm	524	590	686	740
	轨道形式 Orbital form	/	滚珠线轨 Linear guide	滚珠线轨 Linear guide	滚珠线轨 Linear guide	滚珠线轨 Linear guide
主轴 Spindle	主轴锥孔 (型号/安装尺寸) Spindle motor (motor)	mm	BT40 φ 140	BT40 φ 150	BT40 φ 160	BT40 φ 150
	主轴转速 Three axis servo motor XYZ	rpm	12000	10000	8000	10000
	主轴传动方式 Cutting water motor	/	直连式 Direct driven	皮带式 Belt type	皮带式 Belt type	皮带式 Belt type
马达 Motor	主轴马达 (电机) Spindle motor (motor)	kw	7.5	7.5	15	18.5
	三轴伺服马达XYZ Three axis servo motor XYZ	/	β 12/ β 12/ β 22	β 12/ β 12/ β 22	β 22/ β 22/ β 22	β 40/ β 40/ β 40
	切削水马达 Cutting water motor	m³/h-m	4-40	4-40	4-40	4-40
精度 Accuracy	定位精度 positioning	mm	± 0.006	± 0.006	± 0.006	± 0.015
	重复定位精度 Repeat positioning	mm	± 0.003	± 0.003	± 0.003	± 0.01
进给 Feeding	X/Y/Z轴快速进给 XYZ axis fast feed	m/min	48/48/48	48/48/48	36/36/36	24/24/24
	最大切削进给 Maximum cutting feed	mm/min	10000	10000	10000	10000
机床尺寸 Feeding	长/宽/高 L/w/h	mm	2700*2500*2700	2800*2600*2800	3250*2850*2950	3800*3200*3100
	重量 Weight	T	5	5.5	8	9.5
标准配件 Machinesize	自动给油润滑系统 Automatic feed lubrication system	刚性攻牙 Rigid tapping	LED警示灯 LED warning light	水箱及集屑箱 Water tank and chip collecting box	工具箱 Toolbox	组合压板 Composite clamp
	全罩式密封钣金 Full cover sealing sheet metal	空调 Air-conditioning	LED照明灯 LED lighting	主轴前端防尘吹气 Dust blowing at nose end of spindle	自动断电系统 Automatic power-off system	强力夹头 Strong chuck
选配件 Select accessories	三轴光栅尺 Three axis grating ruler	刀具破损检测器 Tool breakage detector	油污回收系统 Oil recovery system	15000转直连式主轴 15000 RPM straight spindle	主轴中心出水 Spindle center discharge	自动排屑机 Automatic chip removal machine

Product description 产品特点

- 采用一体式铸造，增加刚性。
Adopting integrated casting to increase rigidity.
- 立柱采用更先进的嵌肩结构，立柱刚性加强30%，加工过程中的刀库损耗减少。
The column adopts a more advanced shoulder embedded structure, with a 30% increase in rigidity, reducing the loss of tool magazine during the processing.
- 超宽大底座和宽大的立柱接触面使机床的刚性和稳定性大大优越于同行，切屑能力也大大优于同行。
The ultra wide base and wide column contact surface greatly enhance the rigidity and stability of the machine tool compared to peers, and the chip cutting ability is also greatly superior to peers.
- X轴丝杆座采用一体式铸造，进口双面龙门镗一次加工成型，保证两端同心度在1丝以内，很好的保证了丝杆的同心度和精度的持久性。
The X-axis screw seat adopts integrated casting, and is processed and formed by imported double-sided gantry boring in one process, ensuring that the concentricity of both ends is within 1 wire, which effectively ensures the durability of the screw's concentricity and accuracy.
- 可选配主轴直径160，比原来150的主轴加工刚性提升20%。
Optional spindle diameter 160, which increases the machining rigidity by 20% compared to the original 150 spindle.

Parameter list 参数表

	机型 Machine type	单位 Single position	MY-LV1370	MY-LV1580	MY-LV1690	MY-LV1890
工作台 Worktable	工作台尺寸L*W Table size L*W	mm	700*1500	800*1700	900*1800	900*2000
	工作台最大承重 Max capacity	kg	1000	1200	1200	1200
	T型槽 T-slot	no/mm	5*22*135	5*22*140	5*22*165	5*22*165
行程 Stroke	X/Y/Z轴 XYZ axis	mm	1300*700*750	1500*800*700	1600*900*800	1800*900*800
	主轴端到工作台的距离 Distance from spindle end to table	mm	170-920	170-870	160-960	160-960
	主轴中心至立柱轨道距离 Distance from spindle center to column track	mm	740	850	960	960
	轨道形式 Orbital form	/	滚珠线轨 Linear guide	滚珠线轨 Linear guide	滚珠线轨 Linear guide	滚珠线轨 Linear guide
主轴 Spindle	主轴锥孔 (型号/安装尺寸) Spindle motor (motor)	mm	BT50 φ 155	BT50 φ 155	BT50 φ 190	BT50 φ 190
	主轴转速 Three axis servo motor XYZ	rpm	8000	8000	6000	6000
	主轴传动方式 Cutting water motor	/	皮带式 Belt type	皮带式 Belt type	皮带式 Belt type	皮带式 Belt type
马达 Motor	主轴马达 (电机) Spindle motor (motor)	kw	18.5	18.5	18.5	18.5
	三轴伺服马达XYZ Three axis servo motor XYZ	/	β 40/ β 40/ β 40	β 40/ β 40/ β 40	β 40/ β 40/ β 40	β 40/ β 40/ β 40
	切削水马达 Cutting water motor	m³/h-m	4-40	4-40	4-40	4-40
精度 Accuracy	定位精度 positioning	mm	± 0.015	± 0.015	± 0.015	± 0.015
	重复定位精度 Repeat positioning	mm	± 0.01	± 0.01	± 0.01	± 0.01
进给 Feeding	X/Y/Z轴快速进给 XYZ axis fast feed	m/min	24/24/18	20/20/15	20/20/15	20/20/15
	最大切削进给 Maximum cutting feed	mm/min	10000	10000	10000	10000
机床尺寸 Feeding	长/宽/高 L/w/h	mm	4600*3500*3100	4300*3750*3100	4600*4500*3700	4700*4600*3800
	重量 Weight	T	10.5	12	12.5	15
标准配件 Machinesize	自动给油润滑系统 Automatic feed lubrication system	刚性攻牙 Rigid tapping	手提吹气枪 Hand blow gun	油冷机 Oil cooler	主轴环状喷水 Spindle ring spray	
	全罩式密封钣金 Full cover sealing sheet metal	空调 Air-conditioning	地脚螺丝与垫块 Anchor screws and pad	操作说明书 Operating instruction	锁刀座 Lock seat	
选配件 Select accessories	三轴光栅尺 Three axis grating ruler	刀具破损检测器 Tool breakage detector	圆盘刀库 Disk cutter library	自动对刀仪 Automatic knife setting machine	第四轴 Fourth axis	侧铣头 Side milling head

Engineering sample 工程样本



奔驰件 Worktable

Program	Type	Tool	RPM	Feed
1 STITCH1	Rough	D8	4000	1500
1 STITCH2	Finish	D4	5000	1000
1 STITCH3	Finish	R2	10000	2000

合模件 Buckling-closing die

Program	Tool	RPM	Feed	MarginXY/Z	Time
A1-1-01	D6	3000	2500	0.2/0.15	0:08:25
A1-1-02	R3	8500	1800	0.04/0.04	0:22:45
A1-1-03	R3	11000	1800	0/0	0:58:32
A1-1-04	B6R0.5	8500	2000	0.03/0.03	0:02:26
A1-1-05	B6R0.5	11000	1600	0/0	0:10:28



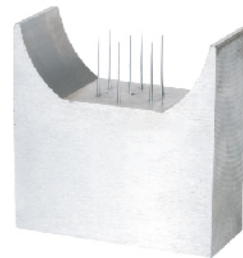
合模件 Buckling-closing die

Program	Type	Tool	RPM	Feed	MarginXY/Z	Time
A1-2-01	Rough	D6	3000	2500	0.15/0.15	0:38:47
A1-2-02	Middle	B6R0.5	7500	2000	0.1/0.1	0:11:19
A1-2-03	Middle	R3	7500	1800	0.03/0.03	0:30:42
A1-2-04	Middle	R1.5	7500	1200	0.05/0.05	0:28:02
A1-2-05	Finish	R3	12000	1800	-0.01/-0.01	1:12:47
A1-2-06	Finish	R1.5	12000	1500	-0.005/-0.005	0:31:44
A1-2-07	Finish	R1	12000	1200	-0.005/-0.005	0:31:21



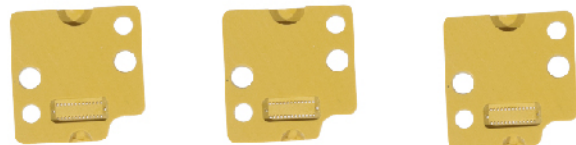
针 Needles

Program	Type	Tool	RPM	Feed	MarginXY/Z	Time
1 STITCH1	Rough	D5	6000	3500	-19.8	17
1 STITCH2	Finish	D4	9800	1500	-20.1	20
1 STITCH3	Finish	D3R0.5	7300	1500	-20.1	14



工程塑料 Engineering plastic

Tool	RPM	Feed	Retracting distance
D4立铣刀	6800	F1500	-
D2立铣刀	7200	F1200	-
D4精铣刀	7000	F800	-
Φ4点钻	4000	F200	-
Φ0.65钻头	4000	F180	Q0.35
Φ0.42钻头	5000	F160	Q0.25
Φ2.5钻头	3800	F200	Q0.08



Standard accessories 标准配件

- 自动给油润滑系统 Automatic feed lubrication system
- 全罩式密封钣金 Full cover sealed rice gold
- 刚性攻牙 Rigid tapping
- LED警示灯 LED warning light
- 操作说明书 Operating instruction
- 空调 Air conditioner
- 工具箱 Toolbox
- 主轴鼻端防尘吹气 Dust blowing at nose end of spindle
- 水箱及集屑箱 Water tank and chip collecting box
- 强力夹头 Strong chuck
- LED照明灯 LED lighting
- 手提吹气枪 Hand blow gun
- 锁刀座 Lock seat
- 油冷机 Oil cooler
- 地脚螺丝与垫块 Anchor screws and pad
- 自动断电系统 Automatic power-off system
- 组合压板 Composite clamp

Options 选配件

- 15000转直连式主轴 15000 RPM straight spindle
- 自动对刀仪 Automatic knife setting machine
- 圆盘刀库 Disk cutter library
- 全齿轮头 All gear head
- 半齿轮头 Half gear head
- 侧铣头 Side milling head
- 五轴 Five-axis
- 主轴中心出水系统 Spindle center outlet system
- 链式刀库 Chain knife library
- 电主轴 Motorized spindle
- 五轴头 Five-axis head
- 第四轴 Fourth axis
- 圆光栅 Circular grating



第四轴
4 axis

自动对刀仪
Tool Probe

圆盘刀库
ATC 24 Pcs

侧铣头
Side Milling Head

15000转直连式主轴
Direct Driven Spindle 15000 RPM



主轴中心出水系统
Spindle Core Flushing System

链式刀库
Chain type ATC

半齿轮头
Half gear head

五轴
5th axis

电主轴
Motorized spindle



圆光栅
Encoder

延长杆
Extension rod

全齿轮头
Gearhead

五轴头
5th axis head



Parameter list
参数表

	机型 Machine type	单位 Single position	MY-L850	MY-L1167	MY-L1270	MY-L1370
工作台 Worktable	工作台尺寸L*W Table size L*W	mm	500*1000	1200*600	1360*700	700*1500
	工作台最大承重 Max capacity	KG	500	800	1000	1000
行程 Stroke	T型槽 T-slot	no/mm	5*18*90	18*5*100	5*18*122	5*18*135
	X/Y/Z轴 XYZ axis	mm	800/500/500	1100/600/700	1200/700/600	1300*700*700
	主轴端到工作台的距离 Distance from spindle end to table	mm	110-610	110-810	87-687	190-890
	主轴中心至立柱轨道距离 Distance from spindle center to column track	mm	560	654	785	757
主轴 Spindle	轨道形式 Orbital form	/	滚珠线轨 Linear guide	滚珠线轨 Linear guide	滚珠线轨 Linear guide	滚珠线轨 Linear guide
	主轴锥孔 (型号/安装尺寸) Spindle taper hole	mm	BT40 φ150	BT40 φ160	BT50 φ155	BT50 φ155
	主轴转速 Spindle speed	rpm	10000	8000	8000	8000
	主轴传动方式 Spindle drive mode	/	皮带式 Belt type	皮带式 Belt type	皮带式 Belt type	皮带式 Belt type
马达 Motor	主轴马达 (电机) Spindle motor (motor)	kw	7.5	15	18.5	18.5
	三轴伺服马达X/Y/Z Three axis servo motor XYZ	/	β 12/ β 12/ β 22	β 22/ β 22/ β 22	β 40/ β 40/ β 40	β 40/ β 40/ β 40
精度 Accuracy	切削水马达 Cutting water motor	m ³ /h-m	2-30	4-40	4-40	4-40
	定位精度 positioning	mm	± 0.008	± 0.008	± 0.015	± 0.015
进给 Feeding	重复定位精度 Repeat positioning	mm	± 0.006	± 0.006	± 0.01	± 0.01
	X/Y/Z轴快速进给 XYZ axis fast feed	m/min	36/36/16	36/36/16	24/24/12	24/24/12
机床尺寸 Feeding	最大切削进给 Maximum cutting feed	mm/min	10000	10000	10000	10000
	长/宽/高 L/w/h	mm	2800*2600*2800	3250*2850*2950	3800*3200*3100	4000*3500*3100
标准配件 Machinesize	重量 Weight	T	5.5	8	9.5	10.5
	自动给油润滑系统 Automatic feed lubrication system	刚性攻牙 Rigid tapping	LED警示灯 LED warning light	水箱及集屑箱 Water tank and chip collecting box	工具箱 Toolbox	组合压板 Composite clamp
	全罩式密封钣金 Full cover sealing sheet metal	空调 Air-conditioning	LED照明灯 LED lighting	主轴鼻端防尘吹气 Dust blowing at nose end of spindle	自动断电系统 Automatic power-off system	强力夹头 Strong chuck
选配件 Select accessories	三轴光栅尺 Three axis grating ruler	刀具破损检测器 Tool breakage detector	油污回收系统 Oil recovery system	12000转直连式主轴 12000 RPM straight spindle	自动对刀仪 Automatic knife setting machine	第四轴 Fourth axis
	圆盘刀库 Disk cutter library	侧铣头 Side milling head				

Product characteristics
产品特点

■ L系类数控立式加工中心,主要应用于中型零件和模具的加工。
工件在一次装夹后,可连续完成铣、钻、键较等多种工序的加工,可单台使用,也可多台流水线加工零件。具有强力切削,高速定位,机电一体化,自动排屑,安全防护和操作方便等特点。

■ L-series CNC vertical machining centers are mainly used for the processing of medium-sized parts and molds. After a single clamping process, the workpiece can continuously complete various machining tasks such as milling, drilling, and keying. It can be used on a single machine or on multiple assembly lines to process parts. Featuring powerful cutting, high-speed positioning, mechatronics integration, automatic chip removal, safety protection, and easy operation.

Parameter list
参数表

	机型 Machine type	单位 Single position	MY-L1580	MY-L1690	MY-L1890
工作台 Worktable	工作台尺寸L*W Table size L*W	mm	800*1700	900*1800	900*2000
	工作台最大承重 Max capacity	KG	1200	1200	1200
行程 Stroke	T型槽 T-slot	no/mm	5*22*140	5*22*165	5*22*165
	X/Y/Z轴 XYZ axis	mm	1500*800*700	1600*900*680	1800*900*680
	主轴端到工作台的距离 Distance from spindle end to table	mm	130-830	160-760	160-760
	主轴中心至立柱轨道距离 Distance from spindle center to column track	mm	810	950	950
主轴 Spindle	轨道形式 Orbital form	/	滚珠线轨 Linear guide	滚珠线轨 Linear guide	滚珠线轨 Linear guide
	主轴锥孔 (型号/安装尺寸) Spindle taper hole	mm	BT50 φ155	BT50 φ190	BT50 φ190
	主轴转速 Spindle speed	rpm	8000	6000	6000
	主轴传动方式 Spindle drive mode	/	皮带式 Belt type	皮带式 Belt type	皮带式 Belt type
马达 Motor	主轴马达 (电机) Spindle motor (motor)	kw	18.5	18.5	18.5
	三轴伺服马达X/Y/Z Three axis servo motor XYZ	/	β 40/ β 40/ β 40	β 40/ β 40/ β 40	β 40/ β 40/ β 40
精度 Accuracy	切削水马达 Cutting water motor	m ³ /h-m	4-40	4-40	4-40
	定位精度 positioning	mm	± 0.015	± 0.015	± 0.015
进给 Feeding	重复定位精度 Repeat positioning	mm	± 0.01	± 0.01	± 0.01
	X/Y/Z轴快速进给 XYZ axis fast feed	m/min	20/20/12	20/20/12	20/20/12
机床尺寸 Feeding	最大切削进给 Maximum cutting feed	mm/min	10000	10000	10000
	长/宽/高 L/w/h	mm	4300*3750*3100	4600*4500*3700	4700*4600*3800
标准配件 Machinesize	重量 Weight	T	12	12.5	15
	自动给油润滑系统 Automatic feed lubrication system	刚性攻牙 Rigid tapping	手提吹气枪 Hand blow gun	油冷机 Oil cooler	主轴环状喷水 Spindle ring spray
	全罩式密封钣金 Full cover sealing sheet metal	空调 Air-conditioning	地脚螺丝与垫块 Anchor screws and pad	操作说明书 Operating instruction	锁刀座 Lock seat
选配件 Select accessories	三轴光栅尺 Three axis grating ruler	刀具破损检测器 Tool breakage detector	侧铣头 Side milling head	主轴中心出水 Spindle center discharge	自动排屑机 Automatic chip removal machine
	圆盘刀库 Disk cutter library	侧铣头 Side milling head			



Parameter list
参数表

	机型 Machine type	单位 Single position	MY-M850	MY-M1167	MY-M1270	MY-M1370
工作台 Worktable	工作台尺寸L*W Table size L*W	mm	500*1050	1200*600	1360*700	710*1400
	工作台最大承重 Max capacity	KG	600	800	1200	1200
	T型槽 T-slot	no/mm	5*18*90	18*5*100	5*18*152.5	5*18*152.5
行程 Stroke	X/Y/Z轴 XYZ axis	mm	800*500*550	1100/600/700	1200/700/600	1300*700*700
	主轴端到工作台的距离 Distance from spindle end to table	mm	105-655	110-810	87-687	190-890
	主轴中心至立柱轨道距离 Distance from spindle center to column track	mm	550	654	785	757
	轨道形式 Orbital form	/	硬轨 Hard rail	硬轨 Hard rail	硬轨 Hard rail	硬轨 Hard rail
主轴 Spindle	主轴锥孔 (型号/安装尺寸) Spindle taper hole	mm	BT40 φ 150	BT40 φ 160	BT50 φ 155	BT50 φ 155
	主轴转速 Spindle speed	rpm	10000	8000	8000	8000
	主轴传动方式 Spindle drive mode	/	皮带式 Belt type	皮带式 Belt type	皮带式 Belt type	皮带式 Belt type
马达 Motor	主轴马达 (电机) Spindle motor (motor)	kw	7.5	15	18.5	18.5
	三轴伺服马达X/Y/Z Three axis servo motor XYZ	/	β 12/ β 12/ β 22	β 22/ β 22/ β 22	β 40/ β 40/ β 40	β 40/ β 40/ β 40
	切削水马达 Cutting water motor	m³/h-m	2-30	4-40	4-40	4-40
精度 Accuracy	定位精度 positioning	mm	± 0.012	± 0.012	± 0.015	± 0.015
	重复定位精度 Repeat positioning	mm	± 0.008	± 0.008	± 0.01	± 0.01
进给 Feeding	X/Y/Z轴快速进给 XYZ axis fast feed	m/min	16/16/16	16/16/16	10/10/12	10/10/12
	最大切削进给 Maximum cutting feed	mm/min	10000	10000	10000	10000
机床尺寸 Feeding	长/宽/高 L/wh	mm	2800*2600*2800	3250*2850*2950	3800*3200*3100	4600*3500*3100
	重量 Weight	T	6.2	8	9.5	10.5
标准配件 Machinesize	自动给油润滑系统 Automatic feed lubrication system	刚性攻牙 Right tapping	LED警示灯 LED warning light	水箱及集屑箱 Water tank and chip collecting box	工具箱 Toolbox	组合压板 Composite clamp
	全罩式密封钣金 Full cover sealing sheet metal	空调 Air-conditioning	LED照明灯 LED lighting	主轴鼻端防尘吹气 Dust blowing at nose end of spindle	自动断电系统 Automatic power-off system	强力夹头 Strong chuck
选配件 Select accessories	三轴光栅尺 Three axis grating ruler	刀具破损检测器 Tool breakage detector	油污回收系统 Oil recovery system	主轴中心出水 Spindle center discharge	自动排屑机 Automatic chip removal machine	圆盘刀库 Disk cutter library

Product description
产品特点

- 树脂砂铸件，铸件全部经过应力消除、时效处理，确保机床能长期保持要求之高精度及使用寿命。
Resin sand castings, all of which have undergone stress relief and aging treatment, ensure that the machine can maintain the required high precision and service life for a long time.
- 所有大件加工部位，由进口机床采用台湾先进工艺切削而成，保证高精度和优美外观。
All large machining parts are cut using advanced Taiwanese technology using imported machine tools, ensuring high precision and beautiful appearance.
- 大件采用多筋条高强度结构设计：重量轻，精度持久稳定和超强承重性能，于切削时展现优异动精度；润滑油路采用内藏式设计。
The large parts adopt a multi ribbed high-strength structural design: light weight, durable and stable accuracy, and super load-bearing performance, demonstrating excellent dynamic accuracy during cutting; The lubricating oil circuit adopts a built-in design.

- 三轴采用高精度、高速、可承受高负荷的台制滚珠丝杆，确保动态精度及耐久的使用寿命。
The three-axis adopts high-precision, high-speed, and platform made ball screw that can withstand high loads, ensuring dynamic accuracy and durable service life.
- 三轴轴承采用NSK/FAG滚珠丝杆专用轴承，降低热变形，提高加工稳定性。
The three-axis bearing adopts NSK/FAG ball screw special bearings to reduce thermal deformation and improve processing stability.
- 机床最终经过激光干涉仪检验及镭射循圆检验，提供高品质的循圆切削、更快速位移、更细微正逆铣加工误差，较传统铣床更具高效切削性。
The machine tool ultimately undergoes laser interferometer inspection and laser circular inspection, providing high-quality circular cutting, faster displacement, and finer forward and backward milling errors, making it more efficient in cutting compared to traditional milling machines.

	机型 Machine type	单位 Single position	MY-M1580	MY-M1690	MY-M1890
工作台 Worktable	工作台尺寸L*W Table size L*W	mm	800*1700	900*1800	900*2000
	工作台最大承重 Max capacity	KG	1500	1600	1600
	T型槽 T-slot	no/mm	5*22*140	5*22*165	5*22*165
行程 Stroke	X/Y/Z轴 XYZ axis	mm	1500*800*700	1600*900*680	1800*900*680
	主轴端到工作台的距离 Distance from spindle end to table	mm	130-830	160-840	160-840
	主轴中心至立柱轨道距离 Distance from spindle center to column track	mm	810	950	950
	轨道形式 Orbital form	/	硬轨 Hard rail	硬轨 Hard rail	硬轨 Hard rail
主轴 Spindle	主轴锥孔 (型号/安装尺寸) Spindle taper hole	mm	BT50 φ 155	BT50 φ 190	BT50 φ 190
	主轴转速 Spindle speed	rpm	8000	6000	6000
	主轴传动方式 Spindle drive mode	/	皮带式 Belt type	皮带式 Belt type	皮带式 Belt type
马达 Motor	主轴马达 (电机) Spindle motor (motor)	kw	18.5	18.5	18.5
	三轴伺服马达X/Y/Z Three axis servo motor XYZ	/	β 40/ β 40/ β 40	β 40/ β 40/ β 40	β 40/ β 40/ β 40
	切削水马达 Cutting water motor	m³/h-m	4-40	4-40	4-40
精度 Accuracy	定位精度 positioning	mm	± 0.015	± 0.015	± 0.015
	重复定位精度 Repeat positioning	mm	± 0.01	± 0.01	± 0.01
进给 Feeding	X/Y/Z轴快速进给 XYZ axis fast feed	m/min	10/10/12	10/10/12	10/10/12
	最大切削进给 Maximum cutting feed	mm/min	10000	10000	10000
机床尺寸 Feeding	长/宽/高 L/wh	mm	4300*3750*3100	4600*4500*3700	4700*4600*3800
	重量 Weight	T	12	12.5	15
标准配件 Machinesize	自动给油润滑系统 Automatic feed lubrication system	刚性攻牙 Right tapping	手提吹气枪 Hand blow gun	油冷机 Oil cooler	主轴环状喷水 Spindle ring spray
	全罩式密封钣金 Full cover sealing sheet metal	空调 Air-conditioning	地脚螺丝与垫块 Anchor screws and pad	操作说明书 Operating instruction	锁刀座 Lock seat
选配件 Select accessories	三轴光栅尺 Three axis grating ruler	刀具破损检测器 Tool breakage detector	自动对刀仪 Automatic knife setting machine	第四轴 Fourth axis	齿轮头 Gear head



Parameter list
参数表

	机型 Machine type	单位 Single position	MY-P1615	MY-P2215	MY-P2518	MY-P2720
工作台 Worktable	工作台尺寸L*W Table size L*W	mm	1200*1600	1200*2000	1400*2700	1800*2500
	工作台最大承重 Max capacity	KG	2500	3500	5000	5000
	T型槽 T-slot	no/mm	5*22*195	5*22*195	7*22*200	9*22*190
行程 Stroke	X/Y/Z轴 X/Y/Z axis	mm	1600/1500/800	2200/1500/800	2700/2000/800	2700/2000/1000
	主轴端到工作台的距离 Distance from spindle end to table	mm	160-960	160-960	250-1050	240-1240
	龙门宽度 Gantry width	mm	1500	1500	1800	2000
	龙门过高 overgantry	mm	1060	1060	1160	1300
	轨道形式 Orbital form	/	滚珠线轨 Linear guide	滚珠线轨 Linear guide	滚珠线轨 Linear guide	滚珠线轨 Linear guide
主轴 Spindle	主轴锥孔 (型号/安装尺寸) Spindle taper hole (Model/mounting size)	mm	BT50 φ 190	BT50 φ 190	BT50 φ 190	BT50 φ 190
	主轴转速 Spindle speed	rpm	6000	6000	6000	6000
	主轴传动方式 Spindle drive mode	/	皮带式 Belt type	皮带式 Belt type	皮带式 Belt type	皮带式 Belt type
	主轴马达 (电机) Spindle motor (motor)	kw	18.5	18.5	18.5	18.5
马达 Motor	三轴伺服马达X/Y/Z Three axis servo motor X/Y/Z	/	β 40/β 40/β 40	β 40/β 40/β 40	β 40/β 40/β 40	β 40/β 40/β 40
	切削水马达 Cutting water motor	m³/h-m	4-40	4-40	4-40	4-40
精度 Accuracy	定位精度 positioning	mm	±0.015	±0.015	±0.015	±0.015
	重复定位精度 Repeat positioning	mm	±0.01	±0.01	±0.01	±0.01
进给 Feeding	X/Y/Z轴快速进给 X/Y/Z axis fast feed	m/min	16	16	16	15
	最大切削进给 Maximum cutting feed	mm/min	10000	10000	10000	10000
	整机重量 Machine weight	T	15	17	23	25
标准配件 Machinesize	自动给油润滑系统 Automatic feed lubrication system	刚性攻牙 Rigid tapping	LED警示灯 LED warning light	水箱及集屑箱 Water tank and chip collecting box	工具箱 Toolbox	组合压板 Composite clamp
	手摺吹气枪 Hand blow gun	油冷机 Oil cooler	主轴环状喷水 Spindle ring spray	地脚螺丝与垫块 Anchor screws and pad	操作说明书 Operating instruction	锁刀座 Lock seat
整机外形尺寸 Overall dimensions	整机外形尺寸 Overall dimensions	mm	5000*3600*3700	6110*3600*3700	7500*3800*3700	7800*4500*4100
选配件 Select accessories	全齿轮头/半齿轮头 Full gear head/half gear head	刀库 Tool magazine	侧铣头 Side milling head	三轴光栅尺 Three axis grating ruler	五轴 Five-axis	主轴中心出水系统 Spindle center outlet system

	机型 Machine type	单位 Single position	MY-P3220	MY-P3518	MY-P4032	MY-P5038	MY-P6038
工作台 Worktable	工作台尺寸L*W Table size L*W	mm	1800*3000	1600*3500	3000*4000	3000*5000	3000*6000
	工作台最大承重 Max capacity	KG	6000	9000	12000	17000	20000
	T型槽 T-slot	no/mm	9*22*190	9*22*180	15*28*200	15*28*200	15*28*200
行程 Stroke	X/Y/Z轴 X/Y/Z axis	mm	3200/2000/1000	3500/2000/1000	4000*3200*1250	5000*3800*1250	6000*3800*1250
	主轴端到工作台的距离 Distance from spindle end to table	mm	180-1180	150-1150	250-1500	250-1500	250-1500
	龙门宽度 Gantry width	mm	2000	1800	3200	3800	3800
	龙门过高 overgantry	mm	1300	1300	1700	1700	1700
	轨道形式 Orbital form	/	滚珠线轨 Linear guide	滚珠线轨 Linear guide	滚珠线轨 Linear guide	滚珠线轨 Linear guide	滚珠线轨 Linear guide
主轴 Spindle	主轴锥孔 (型号/安装尺寸) Spindle taper hole (Model/mounting size)	mm	BT50 φ 190	BT50 φ 190	BT50 φ 200	BT50 φ 200	BT50 φ 200
	主轴转速 Spindle speed	rpm	6000	6000	6000	6000	6000
	主轴传动方式 Spindle drive mode	/	皮带式 Belt type	皮带式 Belt type	皮带式 Belt type	皮带式 Belt type	皮带式 Belt type
	主轴马达 (电机) Spindle motor (motor)	kw	26	26	26	26	26
马达 Motor	三轴伺服马达X/Y/Z Three axis servo motor X/Y/Z	/	a40/a30/a30	a40/a30/a30	a40/a30/a30	a40/a30/a30	a40/a30/a30
	切削水马达 Cutting water motor	m³/h-m	4-40	4-40	4-40	4-40	4-40
精度 Accuracy	定位精度 positioning	mm	±0.02	±0.02	±0.02	±0.025	±0.025
	重复定位精度 Repeat positioning	mm	±0.01	±0.01	±0.01	±0.01	±0.01
进给 Feeding	X/Y/Z轴快速进给 X/Y/Z axis fast feed	m/min	15	15	10	10	8
	最大切削进给 Maximum cutting feed	mm/min	10000	10000	10000	10000	10000
	整机重量 Machine weight	T	30	45	56	60	70
标准配件 Machinesize	自动给油润滑系统 Automatic feed lubrication system	刚性攻牙 Rigid tapping	全罩式密封钣金 Full cover sealing sheet metal	自动排屑机 Automatic chip removal machine	LED照明灯 LED lighting	主轴鼻端防尘吹气 Dust blowing at nose end of spindle	自动断电系统 Automatic power-off system
	手摺吹气枪 Hand blow gun	油冷机 Oil cooler					
整机外形尺寸 Overall dimensions	整机外形尺寸 Overall dimensions	mm	9000*4500*4100	10000*4500*4100	12000*6800*6500	15000*7500*6500	18000*7500*6500
选配件 Select accessories	全齿轮头/半齿轮头 Full gear head/half gear head	刀库 Tool magazine					

	机型 Machine type	单位 Single position	MY-P8038	MY-P10042 (动柱)	MY-P12042 (动柱)	MY-P16042 (动柱)	MY-P20042 (动柱)
工作台 Worktable	工作台尺寸L*W Table size L*W	mm	3000*8000	3000*10000	3000*10000	3000*10000	3000*10000
	工作台最大承重 Max capacity	KG	24000	7T/m²	7T/m²	7T/m²	7T/m²
	T型槽 T-slot	no/mm	15*28*200	28*250	28*250	28*250	28*250
行程 Stroke	X/Y/Z轴 X/Y/Z axis	mm	8000*3800*1250	10000*4200*1250	12000*4200*1250	16000*4200*1250	20000*4200*1250
	主轴端到工作台的距离 Distance from spindle end to table	mm	250-1500	250-1500	250-1500	250-1500	250-1500
	龙门宽度 Gantry width	mm	3800	4200	4200	4200	4200
	龙门过高 overgantry	mm	1700	2200	2200	2200	2200
	轨道形式 Orbital form	/	滚珠线轨 Linear guide	滚珠线轨 Linear guide	滚珠线轨 Linear guide	滚珠线轨 Linear guide	滚珠线轨 Linear guide
主轴 Spindle	主轴锥孔 (型号/安装尺寸) Spindle taper hole (Model/mounting size)	mm	BT50 φ 200	BT50 φ 200	BT50 φ 200	BT50 φ 200	BT50 φ 200
	主轴转速 Spindle speed	rpm	6000	6000	6000	6000	6000
	主轴传动方式 Spindle drive mode	/	皮带式 Belt type	皮带式 Belt type	皮带式 Belt type	皮带式 Belt type	皮带式 Belt type
	主轴马达 (电机) Spindle motor (motor)	kw	26	26	26	26	26
马达 Motor	三轴伺服马达X/Y/Z Three axis servo motor X/Y/Z	/	a40/a30/a30	a40/a30/a30	a40/a30/a30	a40/a30/a30	a40/a30/a30
	切削水马达 Cutting water motor	m³/h-m	4-40	4-40	4-40	4-40	4-40
精度 Accuracy	定位精度 positioning	mm	±0.03	±0.04	±0.04	±0.04	±0.04
	重复定位精度 Repeat positioning	mm	±0.01	±0.02	±0.02	±0.02	±0.02
进给 Feeding	X/Y/Z轴快速进给 X/Y/Z axis fast feed	m/min	8	8	8	8	8
	最大切削进给 Maximum cutting feed	mm/min	10000	10000	10000	10000	10000
	整机重量 Machine weight	T	80	110	130	150	175
标准配件 Machinesize	自动给油润滑系统 Automatic feed lubrication system	刚性攻牙 Rigid tapping	强力夹头 Strong chuck				
	手摺吹气枪 Hand blow gun	油冷机 Oil cooler					
整机外形尺寸 Overall dimensions	整机外形尺寸 Overall dimensions	mm	22000*7500*6500	16000*8000*6500	18000*8000*6500	22000*8000*6500	26000*8000*6500
选配件 Select accessories	全齿轮头/半齿轮头 Full gear head/half gear head	刀库 Tool magazine					



Parameter list
参数表

	机型 Machine type	单位 Single position	MY-E4040	MY-E5050	MY-E6060	MY-E7080
工作台 Worktable	工作台尺寸L*W Table size L*W	mm	400*400	550*500	650*550	800*700
	工作台最大承重 Max capacity	KG	200	200	300	400
	T型槽 T-slot	no/mm	5-14	5-14	5-14	5-14
行程 Stroke	X/Y/Z轴 XYZ axis	mm	450/400/150	500/500/250	600/600/250	700/800/300
	轨道形式 Orbital form	/	滚珠线轨 Linear guide	滚珠线轨 Linear guide	滚珠线轨 Linear guide	滚珠线轨 Linear guide
主轴 Spindle	主轴锥孔 (型号/安装尺寸) Spindle taper hole (Model/mounting size)	mm	ER25	ER25	ER25	ER32
	主轴转速 Spindle speed	rpm	24000	24000	24000	24000
	主轴传动方式 Spindle drive mode	/	电主轴 Motorized spindle	电主轴 Motorized spindle	电主轴 Motorized spindle	电主轴/机械主轴 Electric spindle/mechanical spindle
	主轴刀具直径范围 Spindle tool diameter range	/	φ3-φ12	φ3-φ12	φ3-φ12	φ3-φ12/16
马达 Motor	主轴马达 (电机) Spindle motor (motor)	kw	5.5/7.5	5.5/7.5	5.5/7.5	7.5
	三轴伺服马达X/Y/Z Three axis servo motor XYZ	kw	0.85/0.85/0.85	0.85/0.85/0.85	0.85/0.85/0.85	1.3/1.3/1.3
精度 Accuracy	定位精度 positioning	mm	±0.005	±0.005	±0.005	±0.005
	重复定位精度 Repeat positioning	mm	±0.003	±0.003	±0.003	±0.003
进给 Feeding	X/Y/Z轴快速进给 XYZ axis fast feed	m/min	15/15/15	15/15/15	15/15/15	15/15/15
	最大切削进给 Maximum cutting feed	mm/min	8000	8000	8000	8000
机床尺寸 Feeding	长/宽/高 L/wh	mm	1500*1390*1957	1800*1706*2295	1830*1860*2270	2010*2285*2358
	重量 Weight	T	1800	2500	3000	3600
标准配件 Machinesize	自动给油润滑系统 Automatic feed lubrication system	刚性攻牙 Rigid tapping	LED警示灯 LED warning light	水箱及集屑箱 Water tank and chip collecting box	工具箱 Toolbox	组合压板 Composite clamp
	全罩式密封钣金 Full cover sealing sheet metal	对刀仪 Tool setting apparatus	LED照明灯 LED lighting	主轴鼻端防尘吹气 Dust blowing at nose end of spindle	自动断电系统 Automatic power-off system	强力夹头 Strong chuck
选配件 Select accessories	斗笠式刀库 Bamboo hat style knife library	油雾回收器 Oil mist recovery device	机械主轴 Mechanical spindle	第四轴 Fourth axis		

Product description
产品说明

■ 高精度、高刚性的传动系统对雕铣机的动态加工精度、响应速度及刚性等都有决定性的影响。

The high-precision and high rigidity transmission system has a decisive impact on the dynamic machining accuracy, response speed, and rigidity of the engraving and milling machine.

■ 将机床的自振频率提高全正常使用范围外，以保证高动态加工精度，令伺服系统的调装变得轻松容易。

Increase the natural vibration frequency of the machine tool beyond the full range of use to ensure high dynamic machining accuracy, making the adjustment and installation of the servo system easy.

■ 本公司所有雕铣机均采用两段固定支撑设计并配有适当的预拉力，滚珠丝杆两端均使用2个高精度角推轴承固定，以提高刚性。

All engraving and milling machines in our company adopt a two-stage fixed support design and are equipped with appropriate pre tension. Both ends of the ball screw are fixed with 2 high-precision angle thrust bearings to improve rigidity.

Parameter list
参数表

	机型 Machine type	单位 Single position	MY-E1090	MY-E1311	MY-E1613
工作台 Worktable	工作台尺寸L*W Table size L*W	mm	1060*800	1300*1000	1600*1200
	工作台最大承重 Max capacity	KG	1500	1500	3000
	T型槽 T-slot	no/mm	5-14	5-14	5-14
行程 Stroke	X/Y/Z轴 XYZ axis	mm	900/1000/430	1300/1100/430	1600/1300/550
	轨道形式 Orbital form	/	滚珠线轨 Linear guide	滚珠线轨 Linear guide	滚珠线轨 Linear guide
主轴 Spindle	主轴锥孔 (型号/安装尺寸) Spindle taper hole (Model/mounting size)	mm	ER32/BT30	ER32/BT30	ER32/BT30
	主轴转速 Spindle speed	rpm	24000	24000	24000
	主轴传动方式 Spindle drive mode	/	电主轴/机械主轴 Electric spindle/mechanical spindle	电主轴/机械主轴 Electric spindle/mechanical spindle	电主轴/机械主轴 Electric spindle/mechanical spindle
	主轴刀具直径范围 Spindle tool diameter range	/	φ3-φ20/BT30	φ3-φ20/BT30	φ3-φ20/BT30
马达 Motor	主轴马达 (电机) Spindle motor (motor)	kw	18.5	18.5	18.5
	三轴伺服马达X/Y/Z Three axis servo motor XYZ	kw	3/3/3	3/3/3	3/3/3
精度 Accuracy	定位精度 positioning	mm	±0.005	±0.005	±0.005
	重复定位精度 Repeat positioning	mm	±0.003	±0.003	±0.003
进给 Feeding	X/Y/Z轴快速进给 XYZ axis fast feed	m/min	15/15/15	15/15/15	15/15/15
	最大切削进给 Maximum cutting feed	mm/min	8000	8000	8000
机床尺寸 Feeding	长/宽/高 L/wh	mm	2069*2800*2700	2500*3711*2850	2385*4255*2900
	重量 Weight	T	6000	9000	14000
标准配件 Machinesize	自动给油润滑系统 Automatic feed lubrication system	刚性攻牙 Rigid tapping	手提吹气枪 Hand blow gun	油冷机 Oil cooler	地脚螺丝与垫块 Anchor screws and pad
	全罩式密封钣金 Full cover sealing sheet metal	对刀仪 Tool setting apparatus	操作说明书 Operating instruction	锁刀座 Lock seat	
选配件 Select accessories	斗笠式刀库 Bamboo hat style knife library	油雾回收器 Oil mist recovery device			



Parameter list
参数表

	机型 Machine type	单位 Single position	MY-T500	MY-T600	MY-T700
工作台 Worktable	工作台尺寸L*W Table size L*W	mm	650*400	700*420	800*420
	工作台最大承重 Max capacity	KG	250	250	250
	T型槽 T-slot	no/mm	14*3*125	14*3*125	14*3*125
行程 Stroke	X/Y/Z轴 X/Y/Z axis	mm	500*400*330	600*400*330	700*450*330
	主轴端到工作台的距离 Distance from spindle end to table	mm	150-480	150-480	150-480
	主轴中心至立柱轨道距离 Distance from spindle center to column track	mm	464	464	464
	轨道形式 Orbital form	/	滚珠 Ball	滚珠 Ball	滚珠 Ball
主轴 Spindle	主轴锥孔 (型号/安装尺寸) Spindle taper hole (Model/mounting size)	mm	BT30 φ100	BT30 φ100	BT30 φ100
	主轴转速 Spindle speed	rpm	20000	20000	20000
	主轴传动方式 Spindle drive mode	/	直连式 Directly connected type	直连式 Directly connected type	直连式 Directly connected type
马达 Motor	主轴马达 (电机) Spindle motor (motor)	kw	5.5	5.5	5.5
	三轴伺服马达X/Y/Z Three axis servo motor X/Y/Z	kw	1.5/1.5/3.0	1.5/1.5/3.0	1.5/1.5/3.0
	切削水马达 Cutting water motor	m ³ /h-m	4-40	4-40	4-40
精度 Accuracy	定位精度 Positioning	mm	±0.005	±0.005	±0.005
	重复定位精度 Repeat positioning	mm	±0.003	±0.003	±0.003
进给 Feeding	X/Y/Z轴快速进给 X/Y/Z axis fast feed	m/min	48/48/48	48/48/48	48/48/48
机床尺寸 Feeding	长/宽/高 L/w/h	mm	2350*2093*2382	2350*2093*2382	2450*2093*2382
	重量 Weight	T	2.5	3	3.5
标准配件 Machinesize	自动给油润滑系统 Automatic feed lubrication system	刚性攻牙 Rigid tapping	LED警示灯 LED warning light	水箱及集屑箱 Water tank and chip collecting box	工具箱 Toolbox
	全罩式密封钣金 Full cover sealing sheet metal	空调 Air conditioner	LED照明灯 LED lighting	主轴鼻端防尘吹气 Dust blowing at nose end of spindle	刀库 Tool magazine
选配件 Select accessories	三轴光栅尺 Three axis grating ruler	刀具破损检测器 Tool breakage detector	油污回收系统 Oil recovery system	主轴中心出水系统 Spindle center outlet system	自动排屑机 Automatic chip removal machine

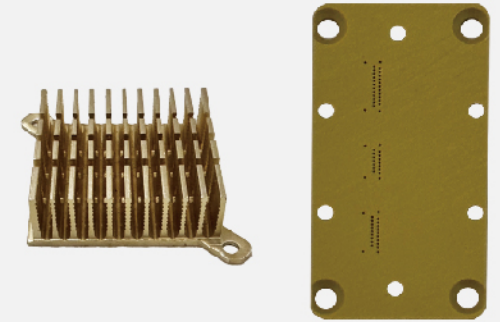
Product description
产品说明

■ 主轴马达与主轴采用直结式驱动，高速攻牙时降低因为皮带所造成的误差，延长刀具寿命。采用日本三菱系列伺服马达，更快的应答速率与输出马力，短距离移动时更能缩短定位时间。

The spindle motor and spindle are driven by the straight knot type, which reduces the error caused by the belt when tapping at high speed and extends the tool life. Japan Mitsubishi series servo motor, faster response rate and output horsepower, short distance movement can shorten the positioning time.

■ 主轴马达可以选购超低惯量规格，大幅缩短攻牙时间。

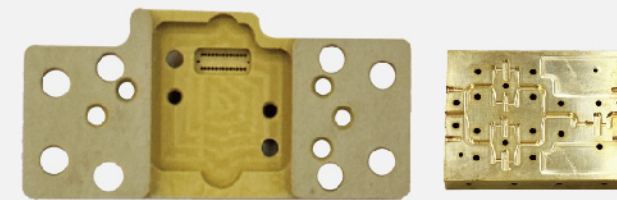
Spindle motor can be selected for ultra-low inertia specifications, greatly reducing tapping time.



防漏设计 Leakproof design

底盘钣金与底座分离式设计，配合底座导流槽，可实现钣金无胶防漏。

The separate design of the sheet metal on the chassis and the base, combined with the base diversion trough, can realize the sheet metal leak-free.



	机型 Machine type	单位 Single position	MY-T800	MY-T1000	MY-T1300
工作台 Worktable	工作台尺寸L*W Table size L*W	mm	1000*500	1100*500	1400*600
	工作台最大承重 Max capacity	KG	350	350	500
	T型槽 T-slot	no/mm	18*5*100	18*5*100	18*5*100
行程 Stroke	X/Y/Z轴 X/Y/Z axis	mm	800*500*330	1000*500*330	1300*650*450
	主轴端到工作台的距离 Distance from spindle end to table	mm	160-490	150-480	150-600
	主轴中心至立柱轨道距离 Distance from spindle center to column track	mm	546	546	705
	轨道形式 Orbital form	/	滚珠 Ball	滚珠 Ball	滚珠 Ball
主轴 Spindle	主轴锥孔 (型号/安装尺寸) Spindle taper hole (Model/mounting size)	mm	BT30 φ100	BT30 φ100	BT30 φ100
	主轴转速 Spindle speed	rpm	20000	20000	12000
	主轴传动方式 Spindle drive mode	/	直连式 Directly connected type	直连式 Directly connected type	直连式 Directly connected type
马达 Motor	主轴马达 (电机) Spindle motor (motor)	kw	5.5	5.5	5.5
	三轴伺服马达X/Y/Z Three axis servo motor X/Y/Z	kw	2.0/2.0/3.0	3.0/3.0/3.0	3.0/3.0/3.0
	切削水马达 Cutting water motor	m ³ /h-m	4-40	4-40	4-40
精度 Accuracy	定位精度 Positioning	mm	±0.005	±0.005	±0.005
	重复定位精度 Repeat positioning	mm	±0.003	±0.003	±0.003
进给 Feeding	X/Y/Z轴快速进给 X/Y/Z axis fast feed	m/min	48/48/48	48/48/48	48/48/48
机床尺寸 Feeding	长/宽/高 L/w/h	mm	2500*2193*2382	2800*2193*2382	3100*2393*2482
	重量 Weight	T	4.2	4.5	5.5
标准配件 Machinesize	自动给油润滑系统 Automatic feed lubrication system	刚性攻牙 Rigid tapping	手提吹气枪 Hand blow gun	油冷机 Oil cooler	地脚螺丝与垫块 Anchor screws and pad
	全罩式密封钣金 Full cover sealing sheet metal	空调 Air conditioner	操作说明书 Operating instruction		
选配件 Select accessories	三轴光栅尺 Three axis grating ruler	刀具破损检测器 Tool breakage detector	自动对刀仪 Automatic knife setting machine	第四轴/五轴 Fourth/Fifth axis	



Parameter list 参数表

机型 Machine type		MY-HA500	MY-HA630	MY-HB630	MY-HA800	
		单工作台 Single workbench	单工作台 Single workbench	分度交换工作台 Indexing exchange workbench	单工作台 Single workbench	
工作台 Worktable	工作台表面尺寸 Table surface dimension	500*500	630*700	630*700	800*800	
	工作台数量 Number of tables	1	1	2	1	
	工作台分度 Table indexing	1°	1°	1°	1°	
	工作台传动比 Table transmission ratio	240	240	240	200	
	交换台传动比 Switchboard gear ratio	/	/	240	/	
	交换台结构形式 Switchboard structure form	/	/	回转式 Rotary	/	
	工作台交换时间 Table switching time	/	/	20S	/	
	工作台最大载荷 Maximum load of table	500KG	1000KG	1000KG	1500KG	
行程 Stroke	倒T型布局 Inverted T-shaped layout	工作台T型槽槽数-槽宽间距 Number of T-shaped slots of the workbench - Slot width spacing	5*18*80	5*22*125	/	5*22-160
		最大工件回转直径 Maximum workpiece rotation diameter	φ900mm	φ1200mm	φ950mm	φ1600mm
		工作台左右移动X向 X-Table left and right	700mm	1050mm	1050mm	1300mm
		主轴箱上下移动Y向 Y-Spindle box up and down	620mm	750mm	750mm	1000mm
主轴(台湾) 同步带 1:1传动 Spindle Synchronous belt driven 1:1	BT50环喷 BT50 Ring spray	立柱前后移动Z向 Z-Column forward and backward	530mm	900mm	900mm	1000mm
		主轴锥孔 Spindle taper	BT50 φ155	BT50 φ190	BT50 φ190	BT50 φ190
		最高转速 Max speed	8000rpm	6000rpm	6000rpm	6000rpm
		主轴中心至工作台面的距离 Spindle core to table	120-740mm	120mm-870mm	0mm-750mm	120mm-1120mm
		主轴端面至工作台中心距离 Spindle nose to table	170-700mm	130mm-1030mm	130mm-1030mm	200mm-1200mm
快移速度 Rapid feed	X向、Y向、Z向 X, Y, Z	倒T型布局 Inverted T-shaped layout	24m/min	24m/min	24m/min	16m/min
		B轴 B-axis	10r/min	10r/min	10r/min	10r/min
定位精度 Positioning	X向、Y向、Z向 X, Y, Z	倒T型布局 Inverted T-shaped layout	±0.01mm	±0.01mm	±0.01mm	±0.012mm
		B轴 B-axis	10"	10"	10"	12"
重复定位精度 Repeat positioning	X向、Y向、Z向 X, Y, Z	倒T型布局 Inverted T-shaped layout	0.006mm (全程) Whole course	0.006mm (全程) Whole course	0.006mm (全程) Whole course	0.008mm (全程) Whole course
		B轴 B-axis	5"	5"	5"	6"
整机外形尺寸 Overall dimensions	mm	3980X3250X2500	5000X3550X3300	6300X3700X3300	5500X4550X4000	
整机重量 Machine weight		5.5T	12T	15T	18T	

Product description 产品特点

■ 高刚性、长久的精度保持性:

1. 机床底座采用了方箱封闭形结构, 采用薄壁多筋布置, 截面形式为稳定性好的对称结构。机床导轨采用进口大承载, 高速高精度滚柱型直线滚动导轨, 从而使机床得到高刚性和长久稳定的精度。
2. 立柱是主轴箱的支承部件。即要承受各个方向的力。又要承受有关的颠覆力矩。因此, 立柱采用双柱封闭框架式结构。空腔内设置有较高的纵向和横向环形筋。
3. 为了提高接触性和精度, 滑鞍导轨采用进口大承载, 高速高精度滚柱型直线滚动导轨, 导轨寿命长, 吸振性好、刚性好。保证了机床在X方向运动中具有较高的重复定位精度。
4. 三向进给单元采用日本THK精密双螺母滚珠丝杠, 在两端施加预紧, 可消除热伸长造成的精度损失。进给伺服电机与滚珠丝杠采用直联方式, 最大程度减少传动误差。
5. 鼠齿盘定位, 定位精度高。

■ 高精度, 高动态响应特性:

采用台湾进口高速高精度一体化主轴部件, 主轴头部配以气幕保护装置, 避免切削液和粉尘等渗入, 确保主轴回转精度并延长使用寿命。

■ 高效率:

1. 主轴转速可达6000rpm, X轴、Y轴、Z轴快移速度达24m/min。
2. 采用24把凸轮机械手换刀机构, 双向就近选刀, 运转快速、平稳、可靠; 机床操作面板上配备了刀库刀套号和刀具号状态显示器, 大大方便加工前刀具准备和调整工作。刀具换刀时间刀对刀6sec。
3. 可根据用户需要, 配备镗铣头、垂直铣头、角度铣头、加长主轴等多种特殊功能附件, 大大拓展了本机床的使用范围。

■ 大扭矩:

采用宽域主轴伺服电机, 宽功率区域大扭矩交流伺服电机及电子两档自动变速方式, 从而使机床主轴在低速运行状态下的输出扭矩大幅度提升, 同时使主轴输出恒功率区向低速段扩展了很大的区域; 该方式具有性能/价格比高、转速范围宽、运行可靠稳定、低噪音以及加工范围广(粗精加工均可)等特点。



机型 Machine type		MY-HB800	MY-HA1000	MY-HB1000	
		分度交换工作台 Indexing exchange workbench	单工作台 Single workbench	分度交换工作台 Indexing exchange workbench	
工作台 Worktable	工作台表面尺寸 Table surface dimension	800*800	1000*1000	1000*1000	
	工作台数量 Number of tables	2	1	2	
	工作台分度 Table indexing	1°	1°	1°	
	工作台传动比 Table transmission ratio	200	200	200	
	交换台传动比 Switchboard gear ratio	200	/	200	
	交换台结构形式 Switchboard structure form	推拉式 Push-pull type	/	推拉式 Push-pull type	
	工作台交换时间 Table switching time	50S	/	50S	
	工作台最大载荷 Maximum load of table	1500KG	1500KG	1500KG	
行程 Stroke	倒T型布局 Inverted T-shaped layout	工作台T型槽槽数-槽宽间距 Number of T-shaped slots of the workbench - Slot width spacing	螺纹孔 Threaded hole	7*22-140	螺纹孔 Threaded hole
		最大工件回转直径 Maximum workpiece rotation diameter	φ1000mm	φ1600mm	φ950mm
		工作台左右移动X向 X-Table left and right	1300mm	1600mm	1600mm
		主轴箱上下移动Y向 Y-Spindle box up and down	1000mm	1000mm	1000mm
主轴(台湾) 同步带 1:1传动 Spindle Synchronous belt driven 1:1	BT50环喷 BT50 Ring spray	立柱前后移动Z向 Z-Column forward and backward	1000mm	1000mm	1000mm
		主轴锥孔 Spindle taper	BT50 φ190	BT50 φ190	BT50 φ190
		最高转速 Max speed	6000rpm	6000rpm	6000rpm
		主轴中心至工作台面的距离 Spindle core to table	0mm-1000mm	150mm-1150mm	0mm-1000mm
		主轴端面至工作台中心距离 Spindle nose to table	200mm-1200mm	200mm-1200mm	200mm-1200mm
快移速度 Rapid feed	X向、Y向、Z向 X, Y, Z	倒T型布局 Inverted T-shaped layout	16m/min	16m/min	16m/min
		B轴 B-axis	8r/min	8r/min	8r/min
定位精度 Positioning	X向、Y向、Z向 X, Y, Z	倒T型布局 Inverted T-shaped layout	±0.012mm	±0.012mm	±0.012mm
		B轴 B-axis	12"	12"	12"
重复定位精度 Repeat positioning	X向、Y向、Z向 X, Y, Z	倒T型布局 Inverted T-shaped layout	0.008mm (全程) Whole course	0.008mm (全程) Whole course	0.008mm (全程) Whole course
		B轴 B-axis	6"	6"	6"
整机外形尺寸 Overall dimensions	mm	7200X4550X4000	5600X4550X4000	7200X4550X4000	
整机重量 Machine weight		21T	20T	23T	